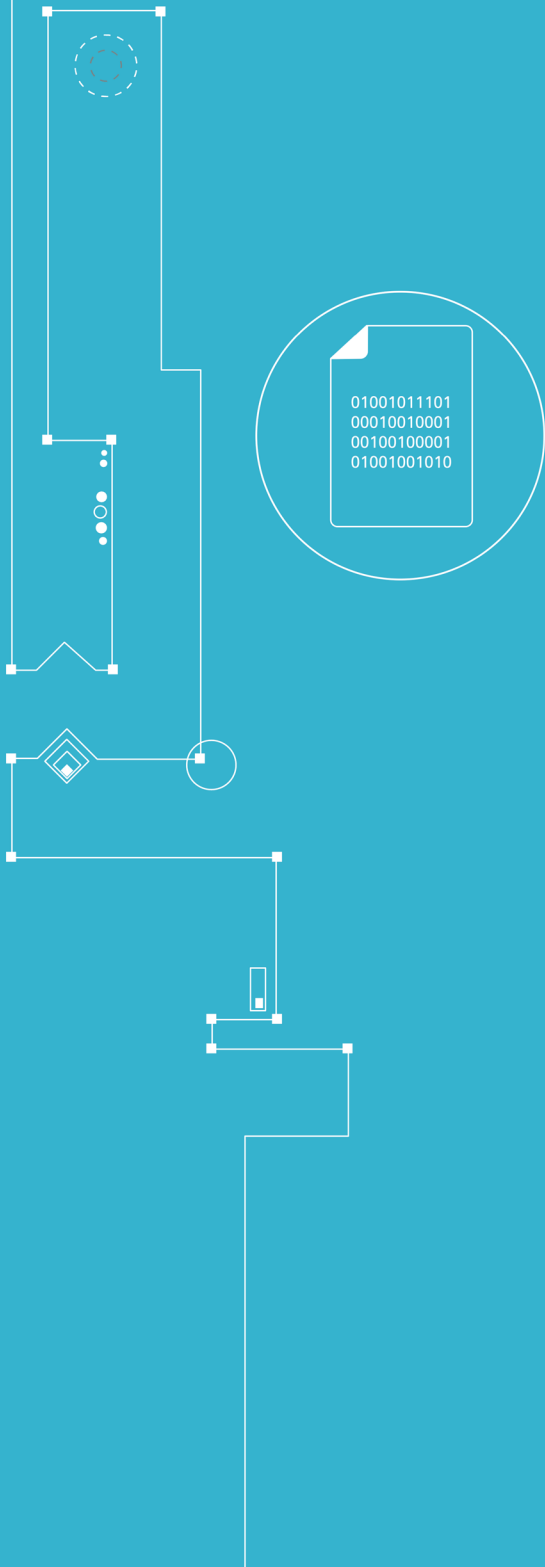




CUBRO
NETWORK VISIBILITY

CUBRO OMNIA 20

PRELIMINARY DATA SHEET



Omnia

At a glance

Definition

The Omnia line is a collection of purpose-driven visibility and monitoring hardware paired with feature stacks developed over years of experience and engineering that encompass Cubro's PacketMaster (L2-4), SessionMaster (L5+), and AppMaster (3rd party software) functionality.

Advantages of Omnia 20

- ✓ Portable
- ✓ Quad-Core ARM CPU
- ✓ 16GB Memory
- ✓ Integrated Copper TAP
- ✓ Internal 2TB SSD
- ✓ Multiple expansion options
- ✓ Support for any SFP and SFP+ (also 10 Gbit BASE-T)
- ✓ No additional port licensing fees.
- ✓ 2-year warranty period

Product Overview



The Omnia 20 is a multi-function network appliance perfect for SMBs, branch offices, and remote deployments. With built-in, passive tapping capability, 10G interfaces, on-board storage, and a diverse set of software options to choose from, it is a device capable of addressing a multitude of network and security challenges.

By pairing a unique hardware feature-set with functions from Cubro's PacketMaster, SessionMaster, and AppMaster feature stacks, the Omnia 20 can take on the roles of an Aggregation TAP, Advanced Network Packet Broker, DPI Probe, Capture appliance, and more.

The Omnia 20 features 8 1GbE copper interfaces with built-in bypass capability that supports fail-safe tapping of up to 4 bidirectional links. It also features 2 10GbE SFP+ and 2 1GbE SFP interfaces. A quad-core ARMv8 CPU and 16GB of memory provide twice the processing performance of the Omnia 10 while a 2TB M.2 SSD, mini-PCI slot, and USB 3.0 type A connector provide expansion and connectivity options.

The Omnia 20 is an affordable, high-performance, customizable network appliance with a unique design and flexible feature set. The Cubro Omnia 20 is the only network visibility probe of its kind in the market due to its compact size, built-in TAP, and powerful CPU, all at a compelling price.

Functions / Benefits:

- > Versatile device with multiple software options to fill many roles
- > Built-in tapping and aggregation
- > Local Packet Capture and Analysis
- > NetFlow generation and collector
- > Deep Packet Inspection
- > Advanced Network Packet Broker
- > Supports third-party software and custom applications

Product Capabilities / Features

Link/ Port Aggregation	Aggregation of up to 8 ports links or 4 links 10/100/1000 Mbit to 2 x 1/10 Gbit and or 2 x 1Gbit output ports.
Jumbo Frame Support	The Packetmaster supports jumbo Ethernet frames with a size of up to 9000 bytes.
Ports	8 x 10/100/1000 Base-T 2 x SFP+ 1/10 Gbit 2 x SFP 1Gbit 1 x 10/100/1000 Base-T (Management) 1 x RS232 Console
Configuration / Communication	WEB GUI CLI
Capture Performance	Up to 4.5 Gbit/s for 1518-byte frame
Aggregation latency	Average 700 ns for 64-byte frames
MTBF	198,185 hours

Technical Data / Specifications:

Operating specifications:

Operating Temperature: 0°C to 40°C
Storage Temperature: -10°C to 70°C
Relative Humidity: 10% min, 95% max
Non-condensing

Mechanical specification:

Dimension (W x D x H): 220 x 330 x 44 mm
Weight: 2,95 kg



01001011101
00010010001
00100100001
01001001010

Electrical specifications:

Input Power: 1 x 230V AC

Maximum Power Consumption: 25W

Certifications:

Fully RoHS compliant CE compliant

Safety - UL 60950-1 / CSA C22.2 60950-1-07 / IEC 60950-1 (2005) EN 60950-1 (2006)

Ports

8 X 10/100/100 full duplex Base-T

2 x 1/10 Gbit full duplex SFP/SFP+ Ports for any kind of SFP/SFP+

2 x 1 Gbit full duplex SFP for any kind of SFP

Performance

Performance up to 30 Gbit

4 million packets/sec

Boot time from power on to working 120 sec

Packet delay through processing less than 700 ns

Management

Management Port: (1) RJ45 10/100 Mbit Configuration (CLI) Port: (1) RS-232 DB9 USB

Indicators

(All ports) Link LEDs (All ports) Activity LEDs

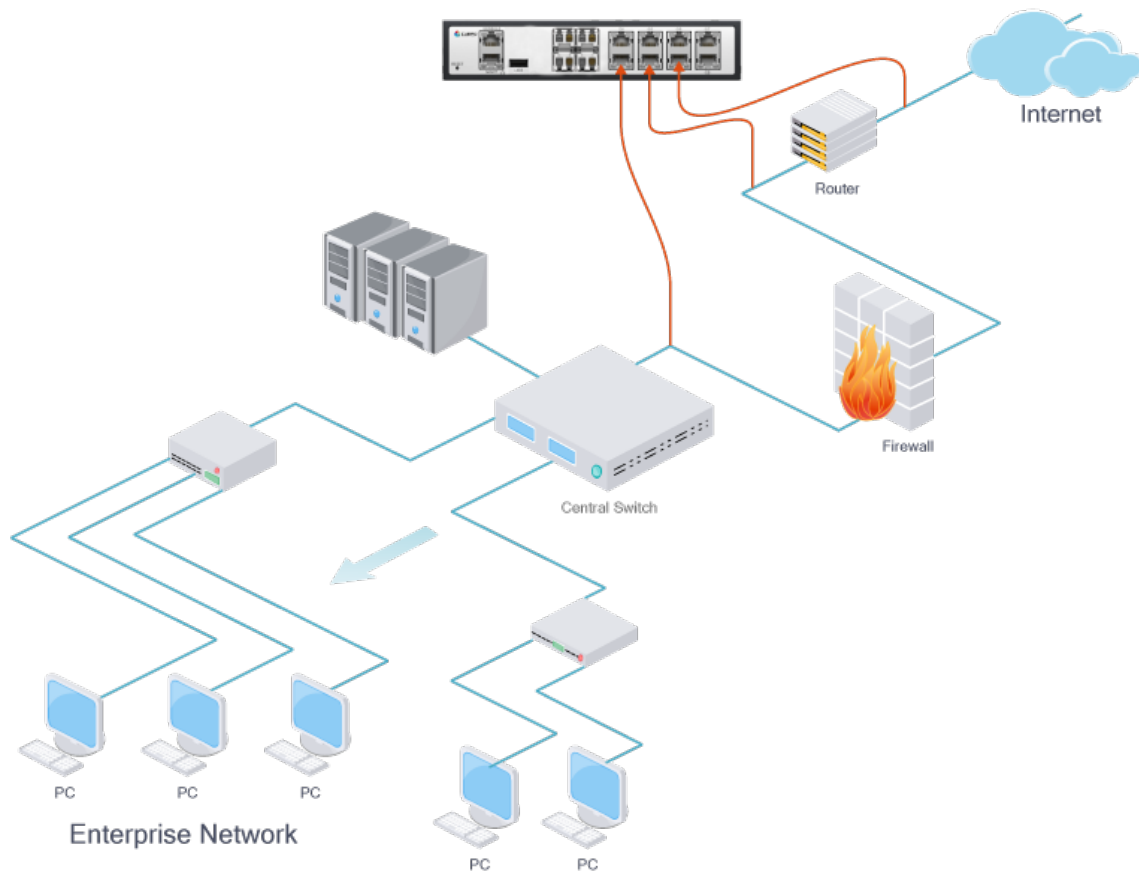
Applications / Solutions

Aggregation TAP

The Omnia 20 supports fail-safe tapping of up to four copper links. The traffic from these links can then be aggregated to the 10G interfaces for output to monitoring and security tools. Alternatively, the 1G copper interfaces can be used as inputs for traffic feeds from SPAN or Mirror ports or a combination of tapping and SPAN inputs. For easier analysis, it is possible to push VLAN tags per input port to identify the traffic's ingress port.

Traffic Capture and Analysis

The Omnia 20 can capture traffic directly from tapped links or SPAN ports directly to disk. A rolling capture dashboard allows the user to navigate through the historical capture data and drill down to the traffic of interest using various filters and real-time feedback such as IP addresses, protocols, and ports present in the selected traffic. PCAP files can be extracted and downloaded for analysis or opened directly on the device using WebShark, a web-based protocol analyzer.



Deep Packet Inspection

The Omnia 20 is capable of performing Deep Packet Inspection using Cubro's custom DPI engine. Ever-increasing amounts of encrypted network traffic has created a situation where IP address and port numbers are no longer sufficient for identifying traffic and what protocols are in use. Cubro's DPI engine can identify 4000 different applications, even when they are ciphered, providing invaluable information to analytics, policy enforcement, and security tools.

Advanced Network Packet Broker

The Omnia 20 can be utilized as a full-featured advanced network packet broker incorporating the functions of Cubro's PacketMaster and SessionMaster feature stacks. Such functions include aggregation, traffic replication, filtering, header stripping, active tunnel termination, load-balancing, deduplication, and much more.

Additional Information

AppMaster, custom applications, and scripting.

The Omnia 20 takes advantage of Cubro's AppMaster, a full-fledged Ubuntu Linux environment capable of supporting a wide range of open-source software as well as applications from Cubro's AppMaster partners, such as NTOP and QXIP.

AppMaster also allows users to build custom applications with various programming and scripting languages. The Omnia 20 also features a ReST API further enhancing the ability to automate tasks and integrate functions with other devices within the network.

Ordering Information

Part Number	Description
CUB.OM-20	Omnia 20 Appliance
CUB.OM-20-SW-A	Omnia 20 Aggregation License
CUB.OM-20-SW-AC	Omnia 20 Aggregation and Capture License
CUB.OM-20-SW-ACD	Omnia 20 Aggregation, Capture and 1 year DPI License
CUB.OM-20-SW-SM	Omnia 20 Sessionmaster License
CUB.OM-20-SW-SMD	Omnia 20 Sessionmaster and 1 year DPI License

For more information please check our website www.cubro.com